

Need help with Recruitment?

Why not save **TIME** and **MONEY** by letting us do the hard work for you?



CARE CAREERS EAST

Fast forward your career

If you would like more information contact our friendly team to discuss your requirements.

☎ 01449 721904

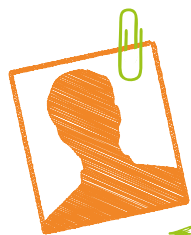
✉ employers@carecareerseast.co.uk

🌐 www.carecareerseast.co.uk

We're not your traditional recruitment agency - we are proud to be not for profit, and offer support and knowledge of the care sector that is second to none. It's what we do!

We understand that in order to provide high standards of care, employers need quality staff across all levels, from managers and team leaders to care assistants and support workers, as well as kitchen and domestic staff.

We provide a number of cost-effective recruitment options, which include a range of services as standard.



APPLICATION



SEARCH

RECRUITMENT OPTIONS

Option	Cost	Number of Vacancies
1	£595.00	Recruitment services for 1 Vacancy
2	£795.00	Recruitment services for 2 Vacancies
3	£995.00	Recruitment services for 3 Vacancies
4	£1295.00	Recruitment services for 4 Vacancies



INTERVIEW

CURRICULUM VITAE



All of the above options include the following services for up to 6 months for vacancies with a starting salary up to 25k

- Employer visit to discuss requirements
- Bespoke job adverts
- Advertising on Care Careers East website
- Social Media adverts
- Advertising via on line jobs sites
- Pre selection of applicants based on criteria
- Telephone interview based on values as well as experience
- Arrange employer interviews

The price you see is the price you pay – there are no further fees - and if you appoint a candidate and they leave within the first 12 weeks we will refund you £75.00 as part of our unique rebate scheme.

You can choose to add on extra services to all of the above options to meet the needs of particular vacancies.

Bolt on Service	Price
Video Interview	£25.00 per candidate
Face to Face Interview and Right to Work Check	£50.00 per candidate
Referencing	£30.00 per candidate
Suffolk Jobs Direct Advert for one month	£100.00

Looking to recruit a manager or senior member of staff?

Premium Service

We offer a Premium Service for positions with a starting salary of at least £25k which includes our standard services plus face to face interviews, right to work checks and referencing. We charge just 5% of the starting salary, compared to many agencies that charge on average 10%.



If you require a more targeted recruitment campaign why not choose our **NEW Suffolk Jobs Direct Package?**



Suffolk Jobs Direct Package

£295.00 plus £100 further payment per candidate recruited

The following services provided for one month:

- Employer visit to discuss requirements
- Bespoke Job Advert with your company logo
- Pre selection of applicants based on criteria
- Telephone interviews
- Arrange employer interviews

If you require a more tailored recruitment approach we are always happy to discuss the needs of your service.



Call our Recruitment Services Manager to arrange a free no obligation visit on 01449 721904 or email employers@carecareerseast.co.uk



We are proud of the outstanding service we provide to both employers and candidates but don't just take our word for it!

Here's what others say about us!

I have a fantastic working relationship with CCE and their knowledge and understanding of the sector is second to none. They have helped me grow business in a new area, and without the quality candidates I have recruited through them I would not have been able to do it. They save me so much time I can really get on and do my job. The service they provide really is one in a million and I cannot recommend them enough.

Home Care Manager, Norwich, Norfolk

I run a service in a very rural part of Suffolk and CCE have delivered where others have 'promised' for much larger fees, but failed to do so. There is mutual respect and understanding, excellent communication and the results delivered so far have been very good. I have been able to expand my business and it is great to work with a team that have such knowledge of the sector. I look forward to continuing our working relationship.

Care Manager, Eye, Suffolk

I already worked in the care sector when I applied for a job through CCE, but they still made sure I had all the information about the vacancy and what I needed for my interview, which really put me at ease. The communication was excellent and I am so happy with my new care role. Thank you CCE!

Candidate, Stowmarket, Suffolk